

Product Re-Launch Information

AdvancedJET AJ-1000

Large Format Inkjet Printer

Overview

The AdvancedJet AJ-1000 easily separates itself from other grand format printers on the market. With its ease of use, production speeds, self-maintenance, and high-capacity one liter cartridges, this unit is designed for production.

With a top print speed of 968 square-feet-per-hour, the AJ-1000 is ideal for high-volume applications such as banners, billboards, and outdoor signage. With the addition of the new MU-1000 accessory, the AJ-1000 is now optimized for printing on un-lined mesh banner. With six piezo printheads and high-capacity one liter cartridges, the AJ-1000 also optimizes brilliant six color graphics at a high rate of speed.

The AJ-1000 can print up to 102" in width on a variety of substrates with beautiful photorealistic quality at a swift 484 square feet per hour. And production time is increased with the automatic management of the daily maintenance functions such as head cleaning, cap cleaning, and wiper.

If speed, production, and graphic quality is a necessity, then the AJ-1000 is the right printer for the job.

Key Features include:

- Blazing Print Speeds
- State of the Art Piezo Print Head Technology
- Advanced Ink Delivery System
- Automatic Maintenance System
- Specialized Media Feed and Take Up System
- Two-Year Factory Warranty
- Roland VersaWorks RIP Software
- Optional MU-1000 Mesh Unit
- Optional Air Scrubber System



Key Features

Blazing Print Speeds

With a maximum print speed of 968 square-feet-per-hour and a precision mode of 484 square-feet-per-hour, the AdvancedJet is the ideal product for high-volume applications. The AJ-1000 produces brilliant full color graphics for banner, billboard, and other outdoor durable graphics such as stadium graphics, building wraps, construction site graphics and fleet graphics.

Type	Resolution	Direction	Dot	Pass	Speed
Banner	720 x 720dpi	Uni/Bi	Non-Variable	8pass	129ft ² /h
Banner	360 x 720dpi	Uni/Bi	Non-Variable	4pass	258ft ² /h
Banner	360 x 360dpi	Uni/Bi	Non-Variable	2pass	484ft ² /h
Flex	720 x 720dpi	Uni/Bi	Non-Variable	8pass	129ft ² /hh
Flex	360 x 720dpi	Uni/Bi	Non-Variable	4pass	258ft ² /h
Vinyl	720 x 720dpi	Uni/Bi	Non-Variable	8pass	129ft ² /h
Vinyl	360 x 720dpi	Uni/Bi	Non-Variable	4pass	258ft ² /h
Banner	360 x 180dpi	Bi	Non-Variable	1pass	968ft ² /h

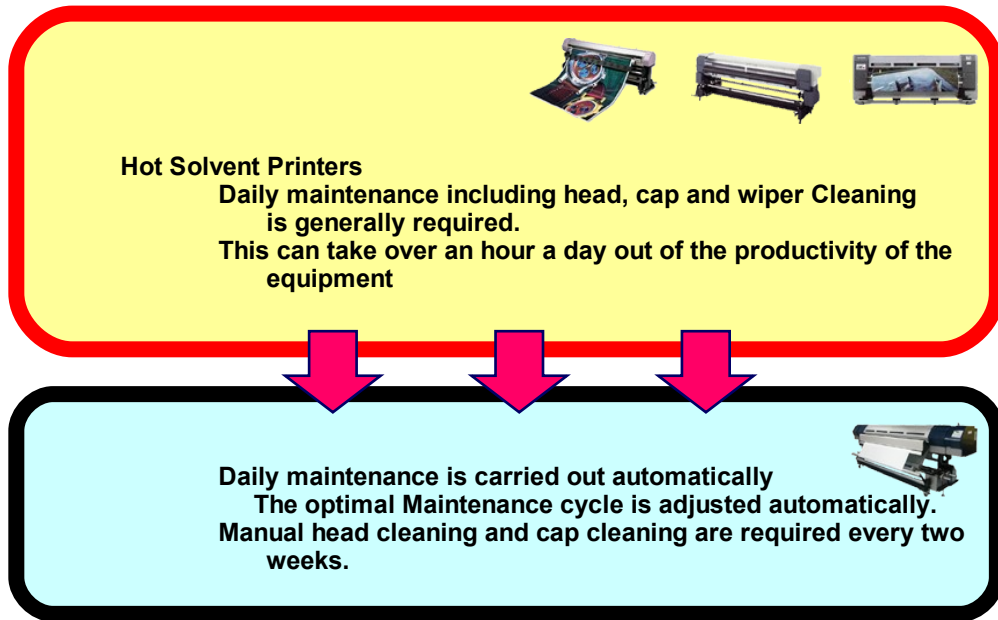
Piezo Print Technology

The AdvancedJet's six 3" super-wide heads enables high-speed printing with high density even at lower resolutions. Along with the AdvancedJet's Piezo Print Head Technology is the high capacity ink delivery system that enables the user to have carefree overnight printing. Another advantage of this highly developed ink system is cartridges can be replaced while printing.



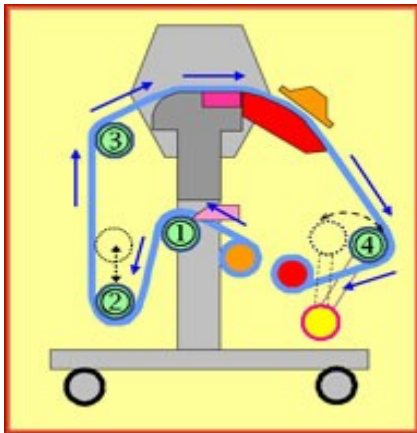
Automatic Maintenance System

No more wait times for starting up or shutting down your solvent printer. With the AdvancedJet's automatic maintenance system, manual head, cap, and wiper cleaning are a thing of the past. The wipers are constantly being soaked in cleaning fluid so there is no need for a manual cleaning.



Media Feed and Take-Up System

Roland’s Advanced “Dancer Roller System” applies appropriate tension to the media for the proper feed. There is also a “Front Dancing Bar” located on the Advanced Jet for keeping media feed straight for optimal results.



Two-Year Factory Warranty

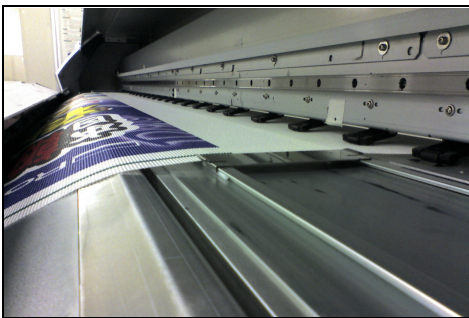
When it comes to service and support, Roland continues to raise the standard. We now offer a Two-Year Factory Warranty when the machine is officially registered and Roland inks are used.



Optional Mesh Unit

Extend the AJ-1000's possibilities with the optional MU-1000 mesh printing system. Un-lined mesh is desirable for printing one-way-vision graphics for point-of-sale and trade show applications and a variety of outdoor graphics such as building wraps. This capability allows the AJ-1000 to make more money for shops with customers in these markets.

This unit is designed to be easily installed to specifically print on un-lined mesh then de-installed to print on all other materials such as banner and adhesive-back vinyl.



Optional Air Scrubbing System

Modifying existing HVAC systems can be both complicated and expensive. With the optional air scrubber system manufactured by Captivair, fumes are captured at the source. The unique fitted hood design removes solvent fumes and re-circulates the cleaned air back into the room assuring a comfortable work environment.

VersaWorks™ Compatibility and Profile Data

RIP Compatibility and Profiles

We are pleased to offer the new VersaWorks 2.2 RIP software with the AJ-1000 printer. This new version of our custom-designed software includes variable data printing as well as the new Roland Color™ color matching system.

Roland Color is a fully customized and integrated color matching system that revolutionizes the printing experience with a Roland device. Both the variable data and color matching features take complicated workflows and simplify them making them very easy-to-understand, even for those not familiar with high-end RIP software packages or color management.

There are a variety of custom media profiles included with the VersaWorks RIP software along with some excellent general purpose generic profiles, assuring high-quality graphic production with a broad array of substrates.



Major software vendors including Onyx, Wasatch and SAI also support the AJ-1000 printers.

Summary

The high-performance AJ-1000 offers a complete solution for high-speed, low-maintenance graphic production. And this well-designed performance machine now offers the industry's best warranty, an optional mesh printing accessory and a bundled software that comes complete with spot color matching capability.