

BN-20 profile bulletin

Dana Curtis

Bn-20 profile bulletin

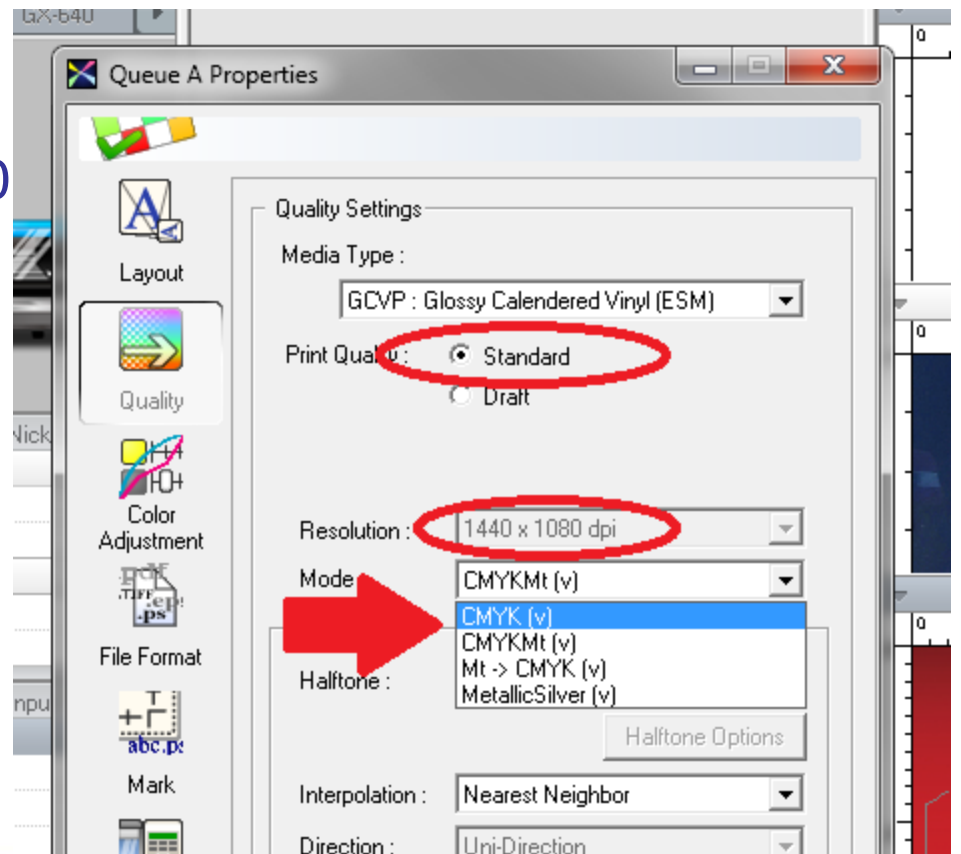
❖ Overview

- New profiling definitions
- BN-20 media characteristics
- Conclusion

Bn-20 profile bulletin

❖ New Profiling Definitions

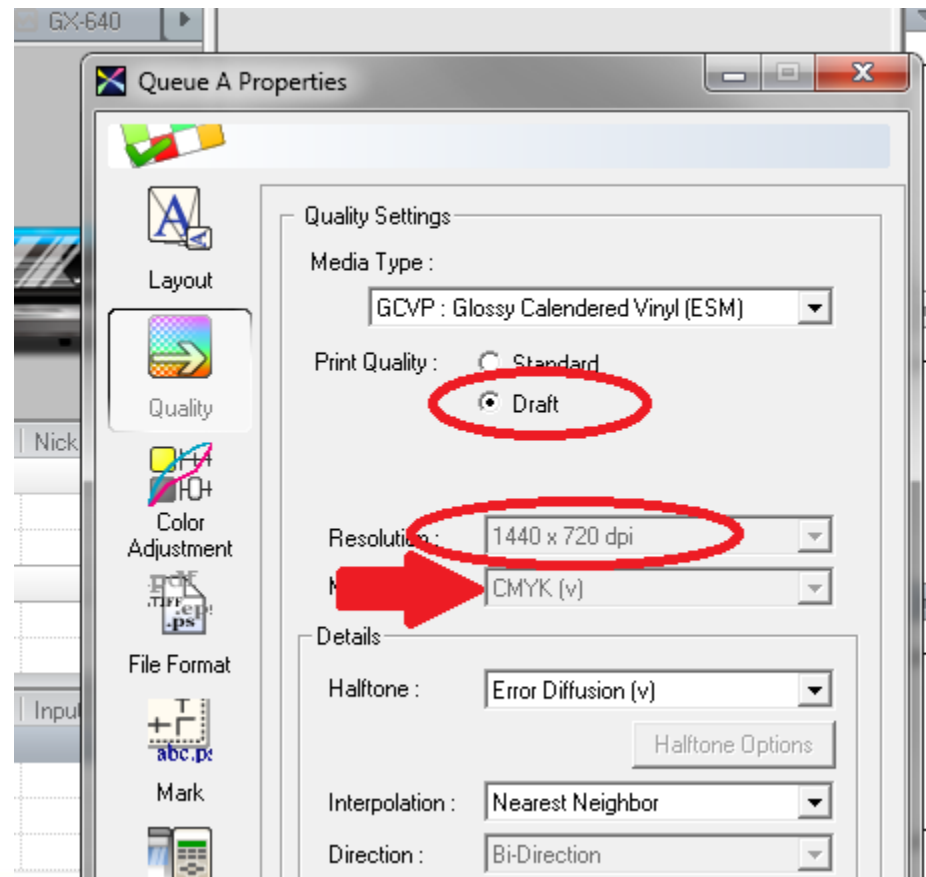
- Standard mode
- Resolution 1440x1080 dpi
- Uni-direction only
- All modes available
- Max head speed
 - 300 mm/sec
 - *May be profiled slower than this



Bn-20 profile bulletin

❖ New Profiling Definitions

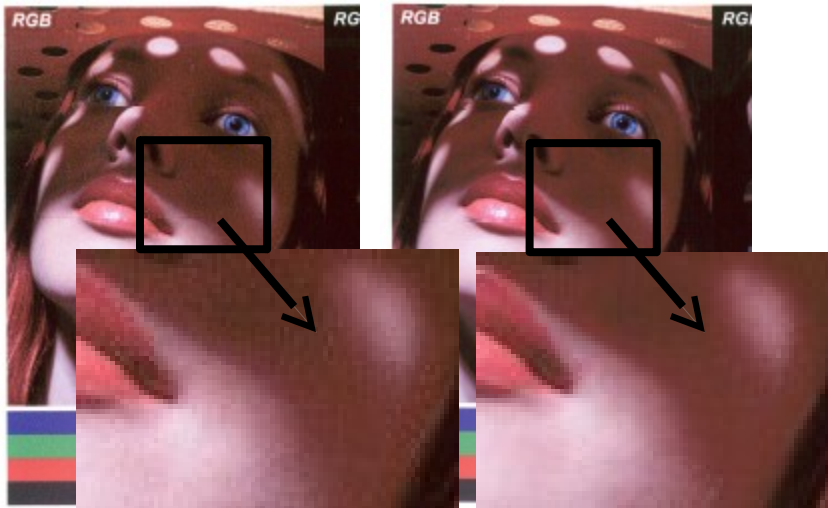
- Draft mode
- Resolution 1440x720 dpi
- Bi-direction only
- CMYK only
- Max head speed
 - 300 mm/sec
 - *May be profiled slower than this



Bn-20 profile bulletin

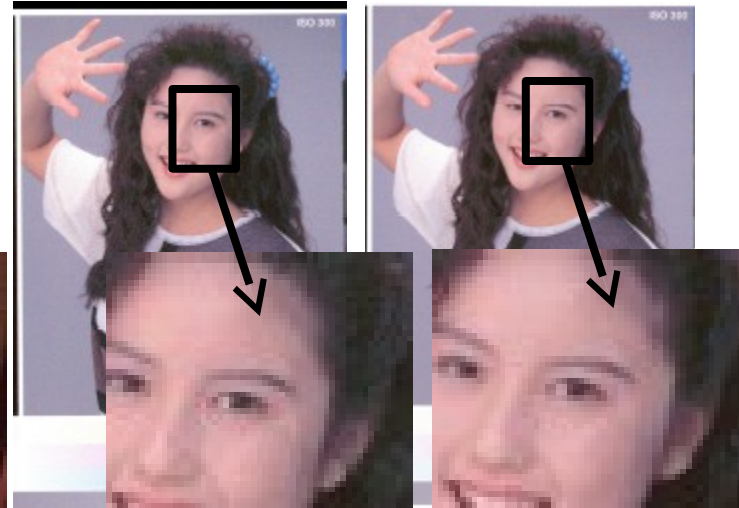
❖ BN-20 Media Characteristics

- Print quality differences between modes
- Skin tones and highlights
- Draft mode will gain twice the speed, yet shows significantly more graininess due to fixed heater setting and no dryer



Model Name(BN-20 XMS0028) File Name
Color Management/Pre-Press U.S. / Ad

Model Name(BN-20 XMS0028) File Name
Color Management/Pre-Press U.S. / Ad



Quality Settings(GCVP : Glossy Calend

Quality Settings(GCVP : Glossy Calend

Bn-20 profile bulletin

❖ BN-20 Media Characteristics

- Print quality differences between modes
- Vertical banding
- Draft mode will gain twice the speed, yet shows instances of vertical banding



- Vertical banding can also be caused by placing machine in areas of high air flow - windows, doorways, AC vents

Bn-20 profile bulletin

❖ Conclusion

- Media with sensitive heat characteristics may not be completely dry after printing. Recommend adding dry times between printing and cutting
- “Standard” and “Draft” are exclusive to the BN-20. It is very rare to see a 1440 dpi resolution described by either of these terms
- BN-20 profile templates are fixed and typically require 18 passes
- There are no [MT] designations in the profile, choice of print mode will determine if metallic ink is used