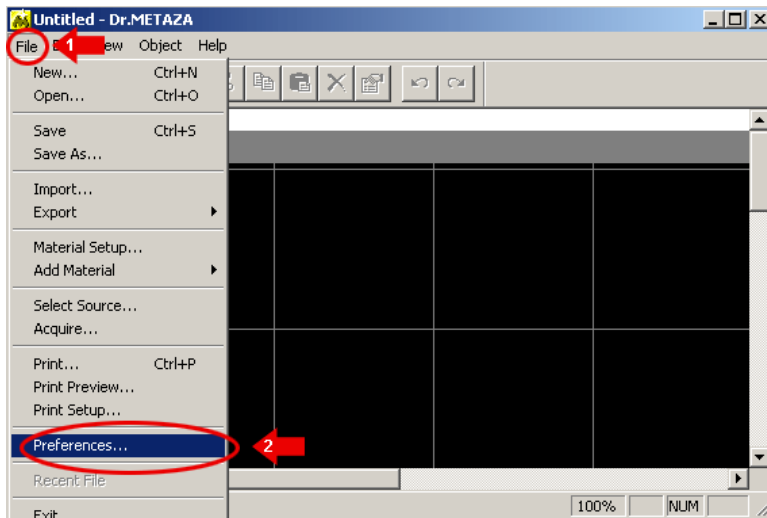


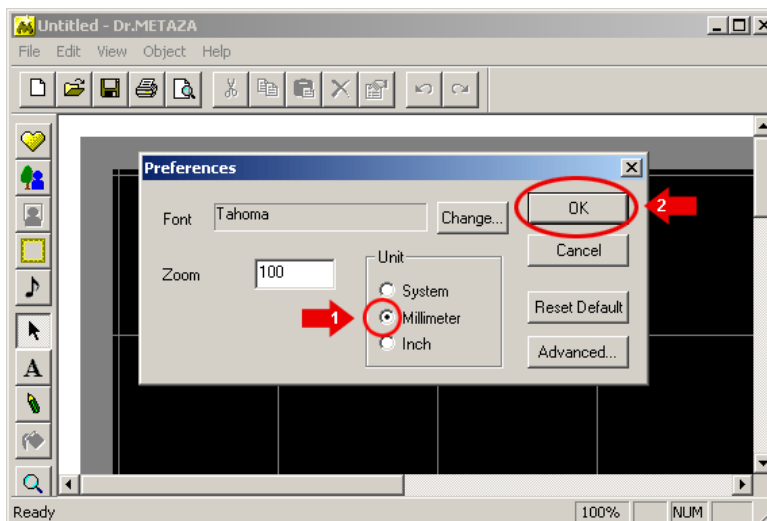
Support Bulletin: RASD-SB00009  
Model: Roland MPX-50/60/70  
Subject: Template Instructions  
Date: 9/9/2005  
Author: RR

-----  
This document covers the installation and use of templates of various pendant shapes for the Roland Photo Impact Printer line (MPX-50/60/70). This document assumes that you have downloaded and extracted the necessary template file from the Roland support website.

1. Open Dr. Metaza or Dr. Metaza2
2. Go to File and click on Preferences.



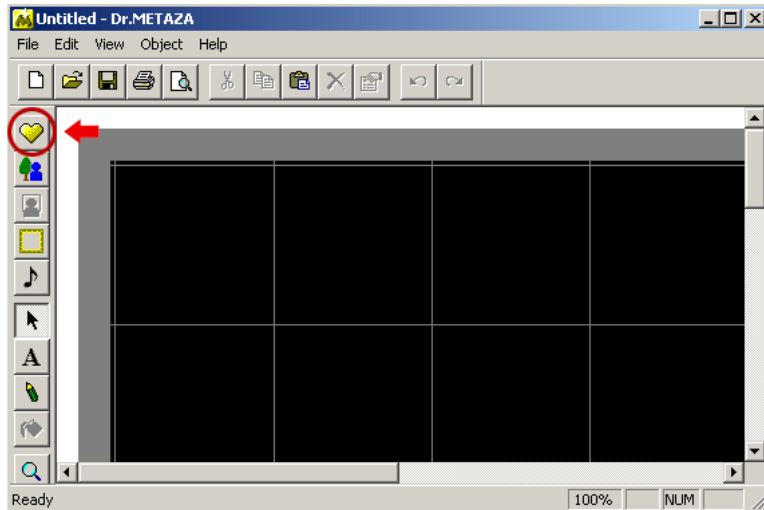
3. In the Preferences window, select Millimeter for the unit and click OK.



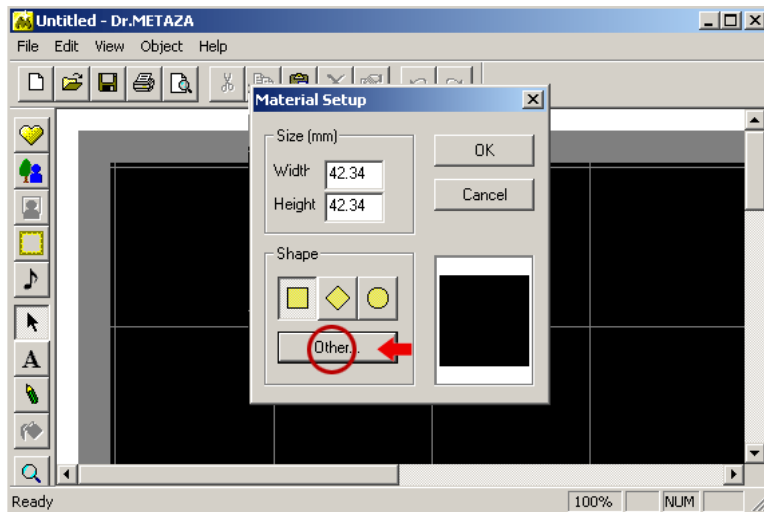
Support Bulletin: RASD-SB00009  
Model: Roland MPX-50/60/70  
Subject: Template Instructions  
Date: 9/9/2005  
Author: RR

---

- Click on the Material Setup Button or select via the File and Material Setup option from the menu.



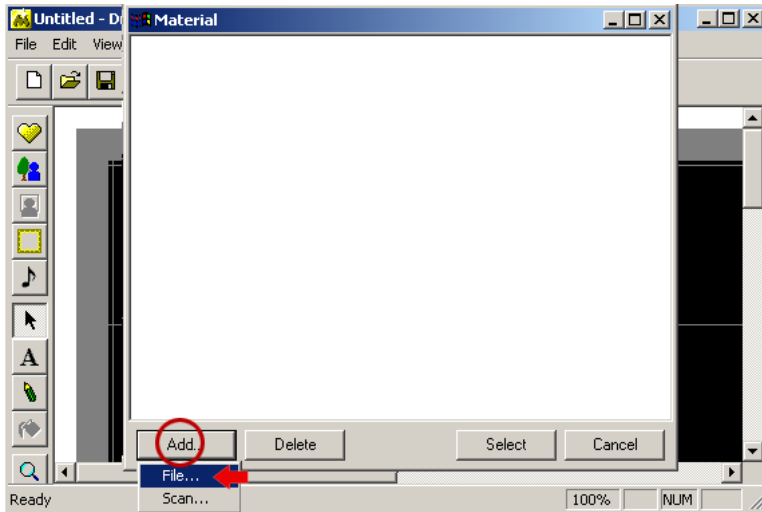
- Click on the Other button.



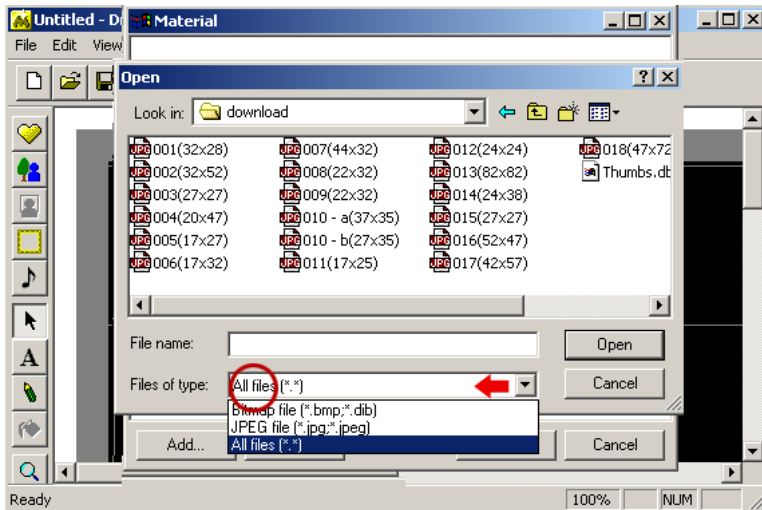
Support Bulletin: RASD-SB00009  
Model: Roland MPX-50/60/70  
Subject: Template Instructions  
Date: 9/9/2005  
Author: RR

---

6. Click the Add button and click File.



7. Find the file you want to upload into Dr. Metaza/Dr. Metaza2 (to via the files, you may need to select All Files in the Files of Type window to view both BMP & JPG formatted files) and select the one you want to use.



Support Bulletin: RASD-SB00009

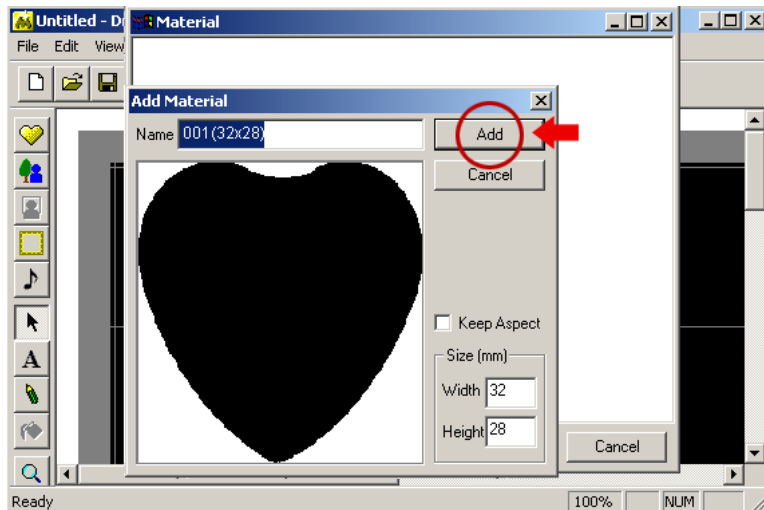
Model: Roland MPX-50/60/70

Subject: Template Instructions

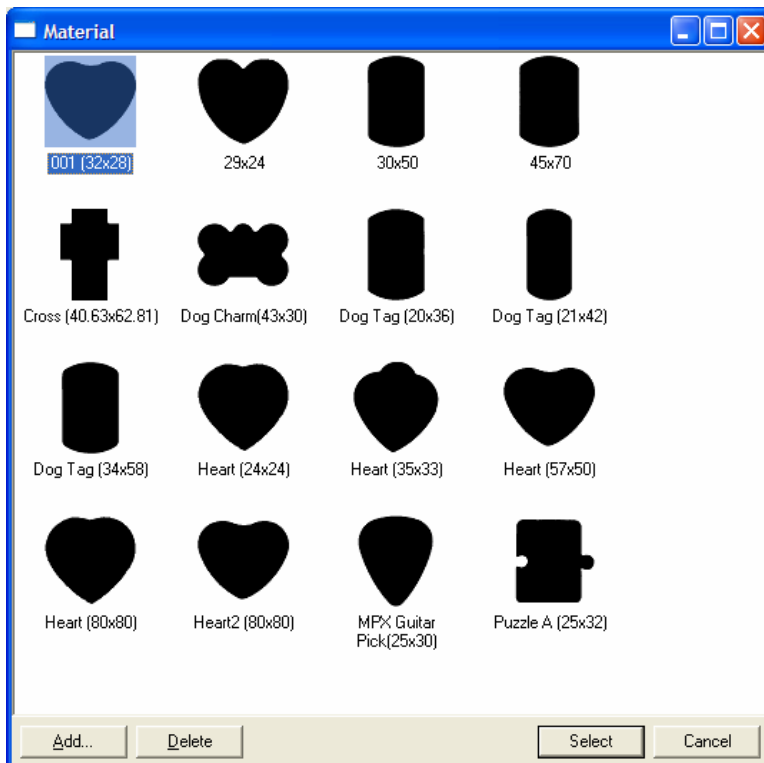
Date: 9/9/2005

Author: RR

8. In the Add Material window, uncheck the Keep Aspect option and input the measured size of your pendant (if not, the image may come out smaller when you print). Once done, click Add.



9. In the Material window, select the new template that was added to the library and click the Select button.

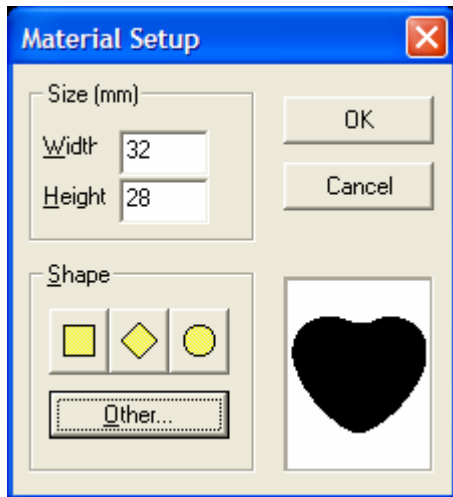


Disclaimer: All of the information contained in this document is based on the information available at the time of its creation. In no event will Roland ASD be liable to you for any damages, including damages for loss of business profits, business interruption, loss of business information and the like arising out of the use of or inability to use these materials.

Support Bulletin: RASD-SB00009  
Model: Roland MPX-50/60/70  
Subject: Template Instructions  
Date: 9/9/2005  
Author: RR

---

10. In the Material Setup screen ensure that the size matches the new template that was added and click OK.



11. Go to File and Print Setup and ensure that the Work Size for the material matches the newly created template (this will ensure that the image fits the material properly and does not come up short).

