

# New Product Information

## SOLJET PROII V SJ-645/745 EX

### Wide Format Inkjet Printer

#### Overview

The newest addition to the Roland wide format inkjet line is the PROII V EX series. Built on the successful PROII EX line, the PROII V series continues Roland DGA's long history of innovation in engineering and design.

Representing the core of the PRO II V printer line, the SJ-645 and SJ-745 printers are for those with high production needs without the time for a long learning curve. A new ink configuration and faster print speeds than the PROII series make these some of the fastest printers in the market. The new media counter and integrated heater control unit allow for easier operation. Best of all is the new VersaWorks RIP. Written by Roland to optimize the advanced features of Roland printers, VersaWorks is a full featured RIP with a very simple to use graphical interface.

Outlined in this document are some of the key features of the Roland PROII V series.

New features include:

- ✚ **Integrated Heater Control Unit**
- ✚ **Ink Configuration**
- ✚ **CCMMYK Printing**
- ✚ **Quick Ink Switch Over**
- ✚ **New Print Modes**
- ✚ **VersaWorks RIP**
- ✚ **Media Counter**

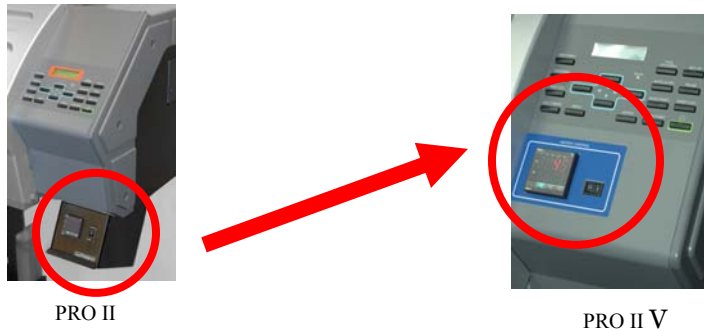


PRO II V SJ-745 EX

## New Features

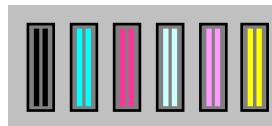
### ✚ Integrated Heater Control Unit

The heating control unit for the *PROII V* printers is now installed in the front panel of the printer. This new integrated feature does away with the need to install an additional device or bother with external tubing, cables or connectors. The integrated heater control unit draws power from the printers existing power supply. The unit's location in the front panel makes it easy to view and configure.

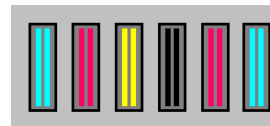


### ✚ Ink Configuration

The *SJ-645EX* and *FJ-745EX* have the option of printing with two different ink configurations. The CMYKLcLm configuration retained from the *PROII* series offers the largest possible color tonal range. For increased production speed, a CCMMYK ink configuration has been added. This configuration will allow for the fastest possible print speeds without loss of color density.



CMYKLcLm  
Configuration



CCMYK  
Configuration

### ✚ CCMMYK Printing

The CCMMYK ink configuration was developed for the production needs of the busiest shops. This allows the *PROII V* to produce a strong vibrant color gamut even at the highest rate of printing.



PRO II V  
CCMMYK  
360x360 dpi

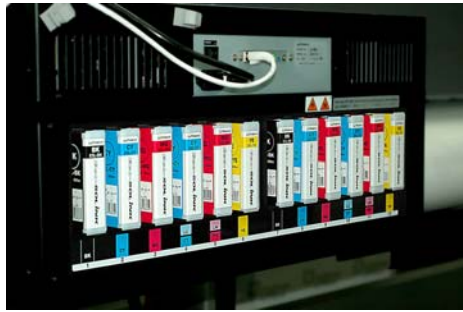


PRO II  
CMYKLcLm  
360x360 dpi

### ✚ Quick Ink Switch Over

For users who need both the color range of CMYKLcLm and the production speeds of the CCMMYK, a new quick ink changeover option has been established. With a simple command from the menu, a user can switch between the two ink configurations. This option will only clean the four required ink lines, reducing ink waste and time of procedure.

Due to this new option, the order of ink lines and cartridges has been changed from the PROII series.



SJ-645 Cartridge Station

### ✚ New Print Modes

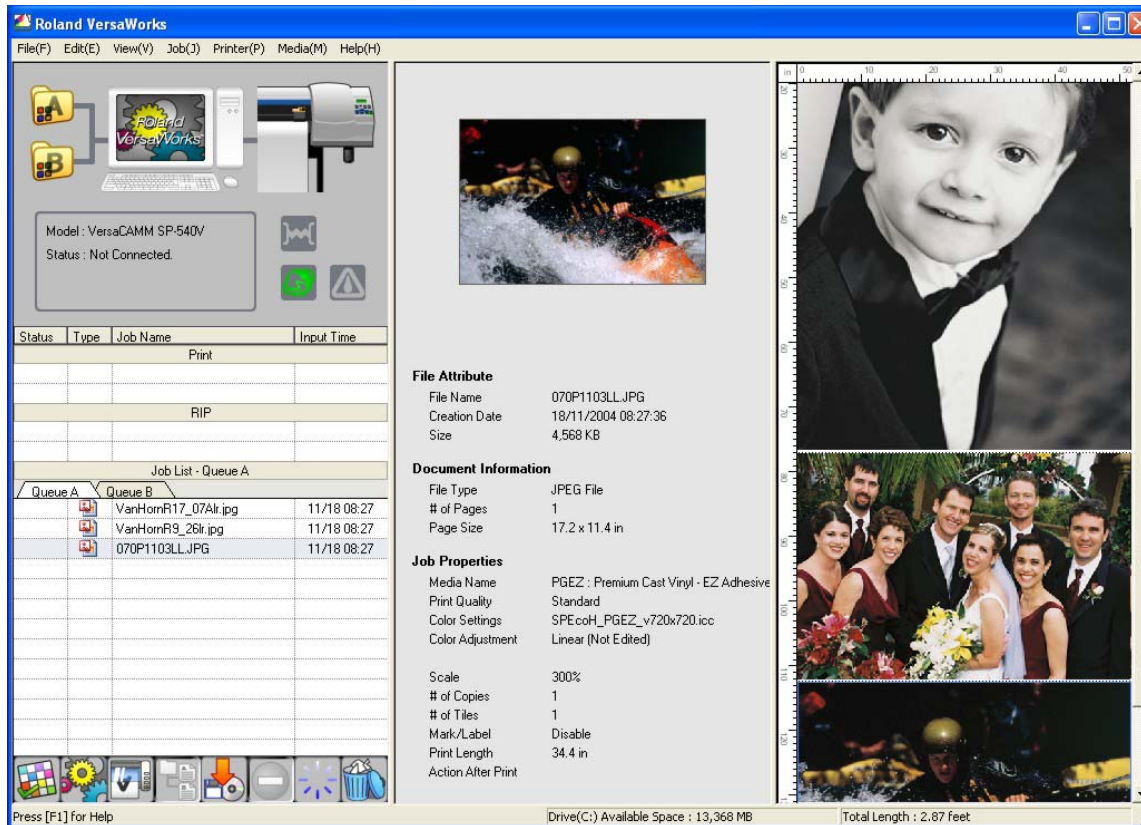
With the new high-production ink configuration, the PROII V printers enjoy a 60% increase in printing speeds without loss of quality at High Quality mode over previous PROII printers. Two new print modes have been added as well. Artistic mode is a true 1440x1440 dpi High Quality mode for printing image-critical graphics on vinyl. The new Billboard mode has been added to work in tandem with the CCMMYK ink configuration in printing larger production jobs at the highest speeds on banner materials.

The chart below outlines all PROII V series modes and print speeds:

Print Mode	Resolution	Pass	Speed
Billboard Banner* <b>CCMMYK ONLY</b>	360x360	2 Pass	340 sfph
High Speed Banner <b>*CMYKLcLm ONLY</b>	450x360	2 Pass	315 sfph
High Speed Vinyl	360x720	4 Pass	170 sfph
Standard Vinyl	360x720	8 Pass	86 sfph
Standard Banner	720x720	8 Pass	86 sfph
High Quality Banner	720x1440	8 Pass	56.7 sfph
High Quality Vinyl	720x1440	8 Pass	56.7 sfph
High Quality Banner	1080x1080	9 Pass	43 sfph
Artistic Vinyl Mode	1440x1440	16 Pass	35 Sfph

## Roland VersaWorks RIP

The PROII V series printers were developed in tandem with Roland VersaWorks™. This all-new RIP was composed by Roland to ensure exceptional production output with unmatched ease of use. VersaWorks is built upon the genuine Adobe® PostScript® CPSI 3016™ engine. It supports true Adobe® PostScript® 3 and can be used on Windows XP and 2000 operating systems.



## Media Counter

A media counter has been added to the new PROII V printers allowing users to enter the length of a new roll of media into the printer's control panel. The counter then tracks the amount of media used from that roll. The user can then check the amount of media left on a roll before sending a print to the printer. The user can also print out the remaining length information on the leading edge of a roll before removing it from the printer. This feature allows you to easily remember how much media is remaining on partial rolls.

## Summary

The PROII V printers offer increased production and ease of use. Ink configurations, new print modes and faster printer speeds allow greater production with uniform quality. The media counter and ink switchover capability help eliminate waste and unnecessary cost. Meanwhile, the VersaWorks RIP provides advanced features and control without a long learning curve.