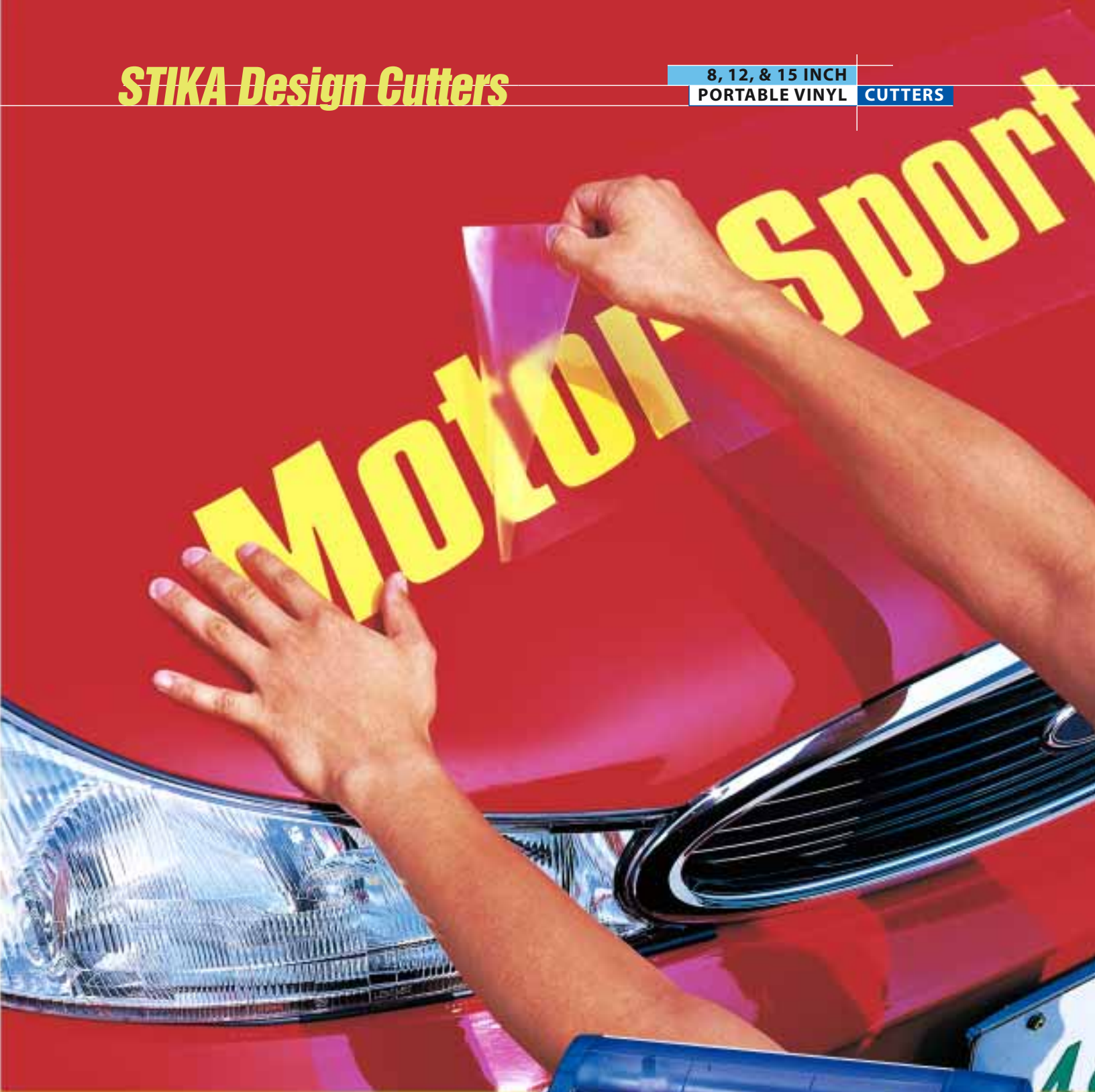


# STIKA Design Cutters

8, 12, & 15 INCH  
PORTABLE VINYL CUTTERS



## Cutting-Edge Vinyl Graphics for Store, Office, School or Home

Signs, displays and labels play an important role in our everyday lives. Whether you need storefront signage, vehicle decals or labels for your store, office, school or home, STIKA design cutters enable you to quickly and easily create eye-popping graphics. Whatever you need, in whatever format you want, STIKA does it all! STIKA's SX Series offers the quality, durability and versatility necessary to meet the needs of everyone from the first-time user to the seasoned professional. And, with Dr. STIKA and Roland CutChoice™ software, designing adhesive vinyl letters, decals, P.O.P. displays and signage has never been easier! For cutting-edge graphics — right from your desktop computer — look no further than STIKA.

### Exciting Graphics Right Out of the Box!



Just like a desktop printer, the STIKA includes a Windows driver that allows users to output directly from vector-based design software. It also comes with Dr. STIKA and CutChoice™ software, which allow even first-time users to create attractive, professional-looking signs and graphics. Dr. STIKA lets users create beautifully contoured graphics using TrueType fonts, as well as outline illustrations imported as TWAIN-scanned or BMP files. You can enlarge or reduce, mirror, rotate, and make larger graphics by cutting two halves separately.



Compatible with Mac or PC, CutChoice expands the STIKA's graphics capabilities by letting users preview multi-colored designs created in Adobe® Illustrator® or CorelDRAW® (Windows® only), then create overlays by selecting individual colors for cutting. CutChoice also lets users cut Windows TrueType fonts without outlining.

### Choose from Three Models

The STIKA comes in three models. The SX-8 accepts 8.5-inch wide media and cuts up to 6.2 inches wide. The SX-12 accepts 12-inch wide media and cuts up to 9.8 inches wide. The SX-15 accepts 12-inch and 15-inch wide media and cuts up to 13.3 inches wide. The SX-15 is more than twice as fast as the SX-8 and SX-12. It sports a powerful servomotor that ups the cutting speed to 4 ips.



MODEL SX-8

Usable media width: 8.5"



MODEL SX-12

Usable media width: 12"

## Signage Made Simple by STIKA

- 1 Design your graphic on a PC or Mac.
- 2 Select "Cut/Plot" or "Print" from the File menu and STIKA cuts out the design.
- 3 Weed your graphic by peeling away the excess.
- 4 Apply the graphic.





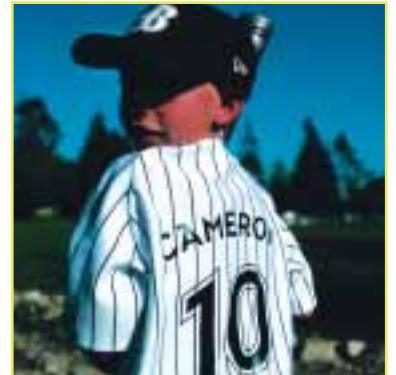
### ***Signs and Panels***

STIKA is ideal for cutting everyday signage that's attractive and functional. You can create a variety of looks by combining colored vinyl with different colored backgrounds.



### ***Window Graphics***

Vinyl comes in a wide selection of attractive colors, allowing you to combine two or more colors for window graphics that grab your customers' attention.



### ***Apparel Decoration***

With STIKA, you can even cut heat transfer material for professional-looking caps and garments. Simply cut out the team logos and names, then apply using a heat press or iron.

## **MODEL SX-15**

Usable media width: 12" or 15"



### ***More than twice as fast (2.5x's) as the SX-8 or SX-12!***

With a cutting speed of 4"/sec., the SX-15 quickly delivers beautiful vinyl graphics on a larger scale. The SX-15 is versatile, too, accommodating both 12" and 15" media.

Specifications	SX-15	SX-12	SX-8
<b>Maximum cutting area</b>	13-3/8" x 39-5/16" (340 mm x 1,000 mm)	9-13/16" x 39-5/16" (250 mm x 1,000 mm)	6-1/4" x 39-5/16" (160 mm x 1,000 mm)
<b>Acceptable media width</b>	14-1/8"- 15" (360 mm - 381 mm) or 11"- 12" (280 mm - 305 mm)	11"- 12" (280 mm - 305 mm)	7-13/16"- 8-7/16" (200 mm - 215 mm)
<b>Maximum cutting speed</b>	3-7/8"/sec. (100 mm/sec.)	1-9/16"/sec. (40 mm/sec.)	1-9/16"/sec. (40 mm/sec.)
<b>Acceptable material</b>	Adhesive-backed vinyl: 0.00394" (0.1 mm) or less in thickness, 0.0118" (0.3 mm) or less in thickness		
<b>Interface</b>	Bi-direction parallel (IEEE1284 / nibble mode)		
<b>Primary power source</b>	Exclusive AC adaptor DC + 19V 2.1 A		
<b>External dimensions</b>	20-1/8" (W) x 6-1/2" (D) x 4-3/16" (H) [510 mm (W) x 165 mm (D) x 105 mm (H)]	16-15/16" (W) x 6-1/2" (D) x 4-3/16" (H) [430 mm (W) x 165 mm (D) x 105 mm (H)]	13" (W) x 6-1/2" (D) x 4-3/16" (H) [330 mm (W) x 165 mm (D) x 105 mm (H)]
<b>Weight</b>	6.8 lb (3.1 kg)	5.7 lb (2.6 kg)	4.6 lb (2.1 kg)
<b>Acoustic noise level</b>	60 dB (A) or less (According to ISO 7779)		
<b>Operating temperature</b>	41° - 104° F (5° - 40° C)		
<b>Operating humidity</b>	35% - 80% (non-condensing)		
<b>Accessories included</b>	AC adaptor : 1, Power cord : 1, Ferrite cores : 2, Cable ties (for securing ferrite cores) : 2, Blade holder/blade : 1, Test cut material : 1, Application tape for test cuts : 1, Cutter protection strip : 1, Roland Software Package CD-ROM : 1, SX-15/12/8 User's Manual : 1		



### Maximize your STIKA's performance with SignMate™ STIKA

Roland SignMate™ STIKA, specially designed to maximize the performance of the Roland STIKA, is an invaluable design tool for signmakers and other graphics professionals. SignMate is compatible with all the most popular desktop operating systems, including Windows® 95, 98, 2000, NT®, XP and Mac. When you want to make the most of STIKA's features, SignMate STIKA is the ideal software to get the job done quickly and easily. Sold separately. For more information, go to [www.signmate.com](http://www.signmate.com).



SX-8



SX-12



SX-15