



Roland Firmware Updater Program
For GX-500/400/300

<About the Updater Program>

Firmware means the control software to operate the machine written on the machine. Firmware Updater Program is the file to rewrite the control software to the latest version.

This Firmware Updater Program is only for the models below. Do not use for other models.

GX-500/400/300 (Hereinafter referred to as machine)

Before operation, please read thorough this document and if you have some questions, please feel free to contact your nearest authorized dealer.

Make sure to put all files into the same folder. The Updater does not work if the files are placed in the different folders.

<Operating environment>

- Windows XP/2000/NT4.0/Me/98 must be installed.
- The bundled Windows driver must be installed.

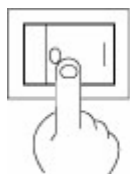
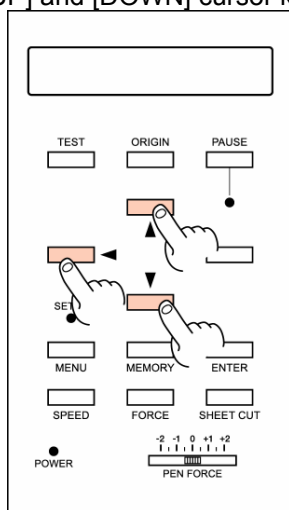
<Operating Procedure>

1. Connect the machine to the computer in which the Windows driver of the machine is installed by USB cable.

*If the [New hardware is found.] appears on the display, Windows Driver is not installed.

Refer to the User's Manual of the machine and install the Windows Driver.

2. Turn the Main Power SW back of the machine on (Switch to [|] side) while pressing the [LEFT], [UP] and [DOWN] cursor keys to enter the Firmware Upgrade Mode .

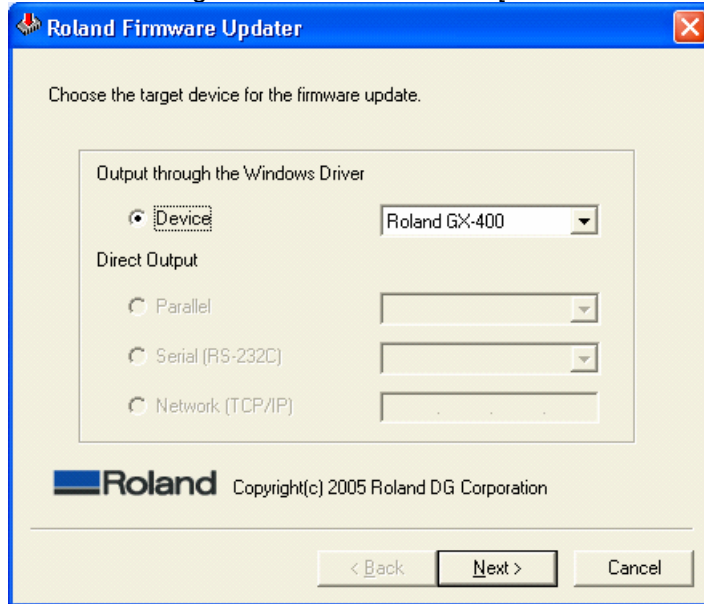


Switch to [|] side.

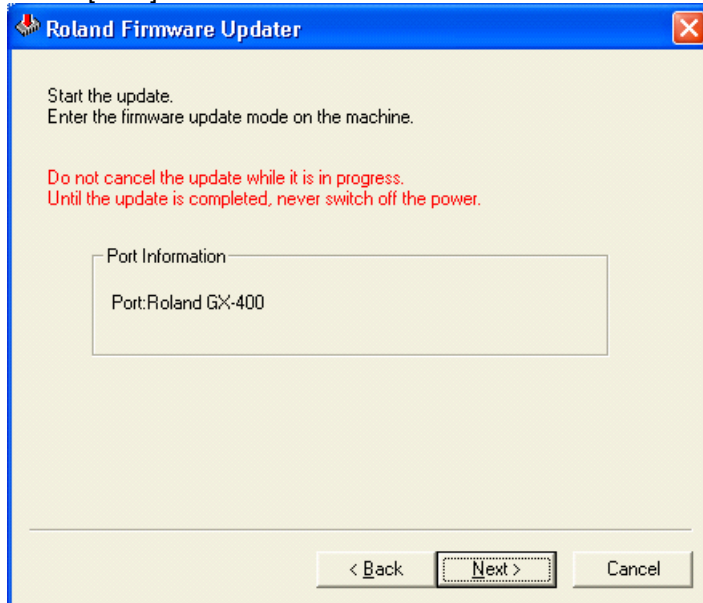
3. Double-click



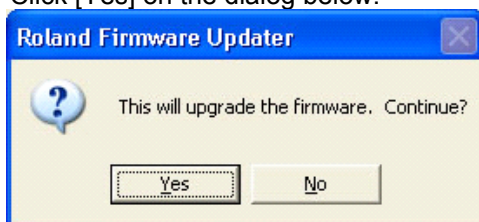
4. Select the using machine from the list of [MACHINE NAME] and click [Next].



5. Click [Next].



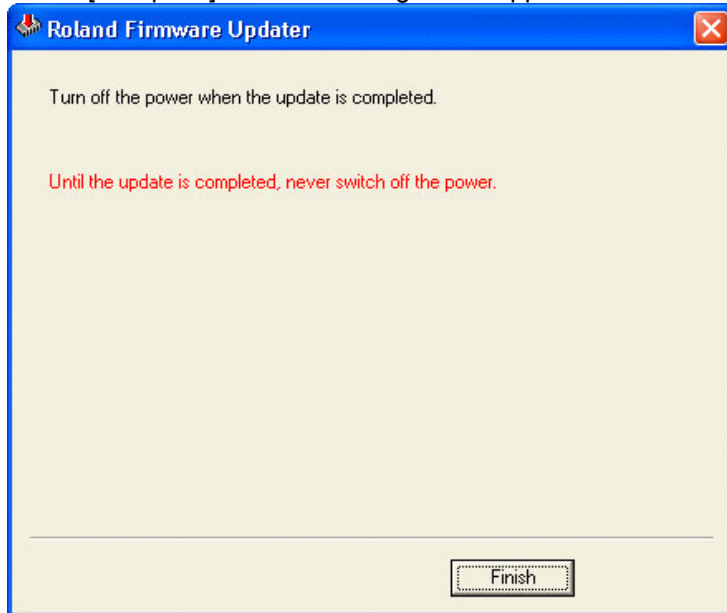
6. Click [Yes] on the dialog below.



7. Roland Firmware Updater Program starts to transfer the firmware. Once the machine is received the firmware, the machine makes a beep sound. The status is displayed on the control panel.
*Do not turn off the machine or pull off the connection cable during transferring the firmware.



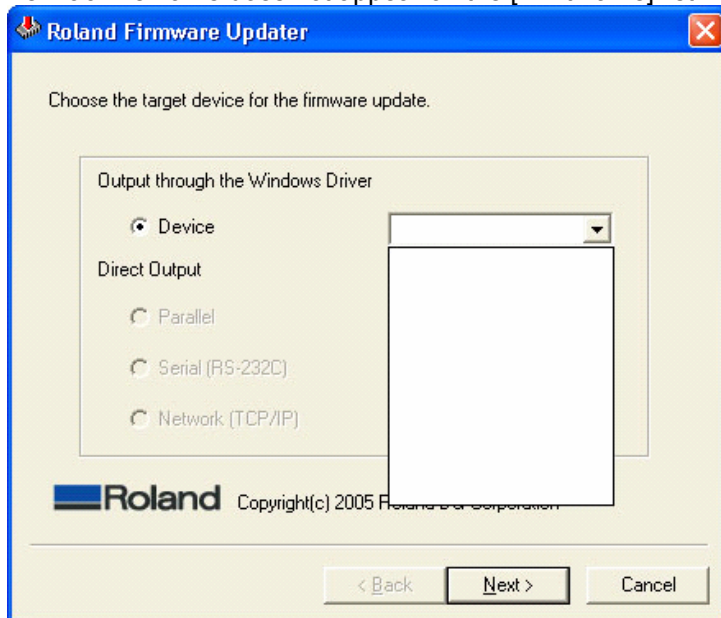
8. Click [Complete] when the dialog below appears.



9. The machine automatically starts the updating process after receiving firmware.

<Trouble shooting>

The machine name does not appear on the [Print name] list.



Cause:

Windows Driver of the machine has not been installed.

The machine has not been connected to the computer.

The Main Power of the machine has been turned off. (Switch to [O] side.)

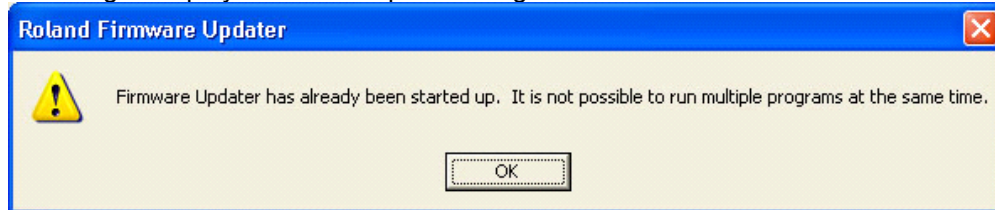
Solution:

Install the Windows Driver.

Connect the machine to the PC.

Turn on the Main Power SW of the machine. (Switch to [|] side.)

The dialog is displayed and the Updater Program does not start.



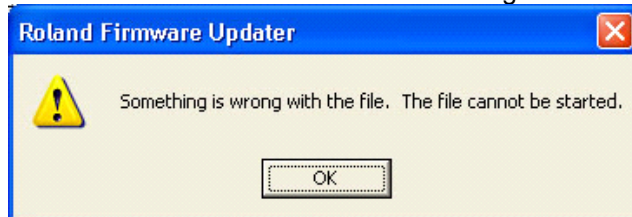
Cause:

The Firmware Updater Program has already been started.

Solution:

Quit the Firmware Updater Program.

Can not transfer the firmware with the dialog below



Cause:

There are plural firmware files in the same folder.

Or the firmware file is missing in the folder.

Solution:

Delete the unnecessary files if there are plural firmware files in the folder. There must be only one firmware file in the folder.

If the firmware file does not exist in the folder, move it to the folder.

The transfer has been canceled with the message below displaying during transferring.



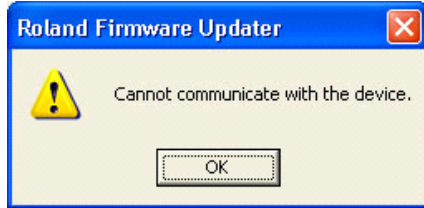
Cause:

During transferring the firmware, the machine is turned off or the cable is pulled off.

Solution:

Check the Power Cable and connecting status between the computer and machine and then follow the transferring procedure from the start again.

[Updating the firmware] appears but the status does not proceed and the message below appears after a few seconds or minutes.



Cause:

The Windows Driver has been damaged.

The Main Power switch is turned off (switched to [O])

Solution:

After uninstall the Windows of the machine install it again.

Turn on the Main Power SW on the machine. (Switch to [|] side.)

<Contact>

Please feel free to contact your nearest authorized dealer.

* Windows® is registered trademark of Microsoft® Corporation in the United States and other countries.

Copyright (C) 2003-2006 Roland DG Corporation
