

Support Bulletin: RASD-SB00001

Model: Roland GX-24

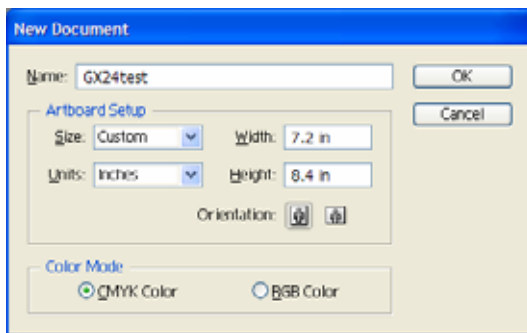
Subject: Cutting from Adobe Illustrator CS (Windows) using the Windows Driver.

Date: 6/23/2005

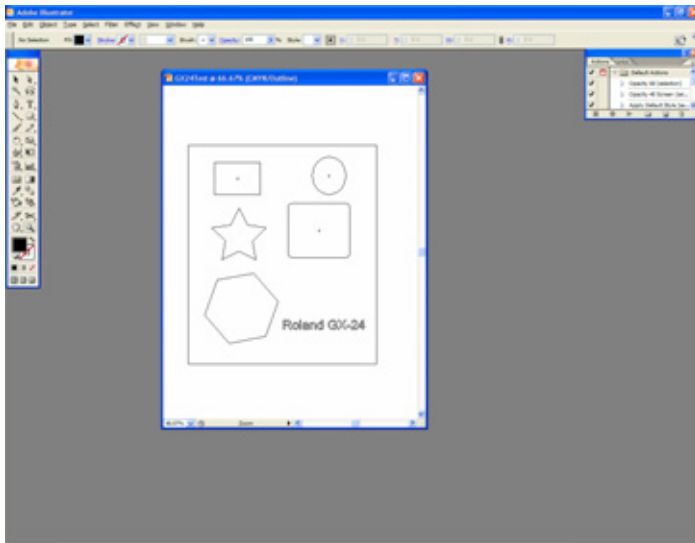
Author: RR

The following document covers how to cut from Adobe Illustrator to the Roland GX-24 using the GX-24 Windows Driver. Prior to going through the steps, please ensure that the Windows Driver for the GX-24 is installed. Please refer to your user documentation for installation instructions.

1. Load the material to be cut into the GX-24 (refer to users manual for loading information).
2. Launch Adobe Illustrator CS/CS2 and create a new document.



3. Input the cut data into the Illustrator art board.



Support Bulletin: RASD-SB00001

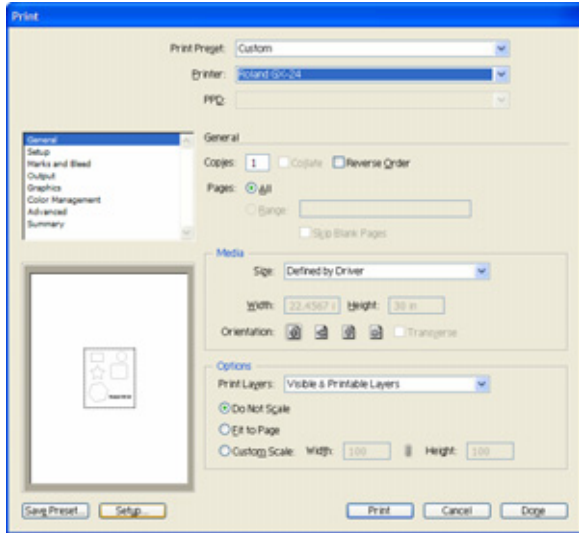
Model: Roland GX-24

Subject: Cutting from Adobe Illustrator CS (Windows) using the Windows Driver.

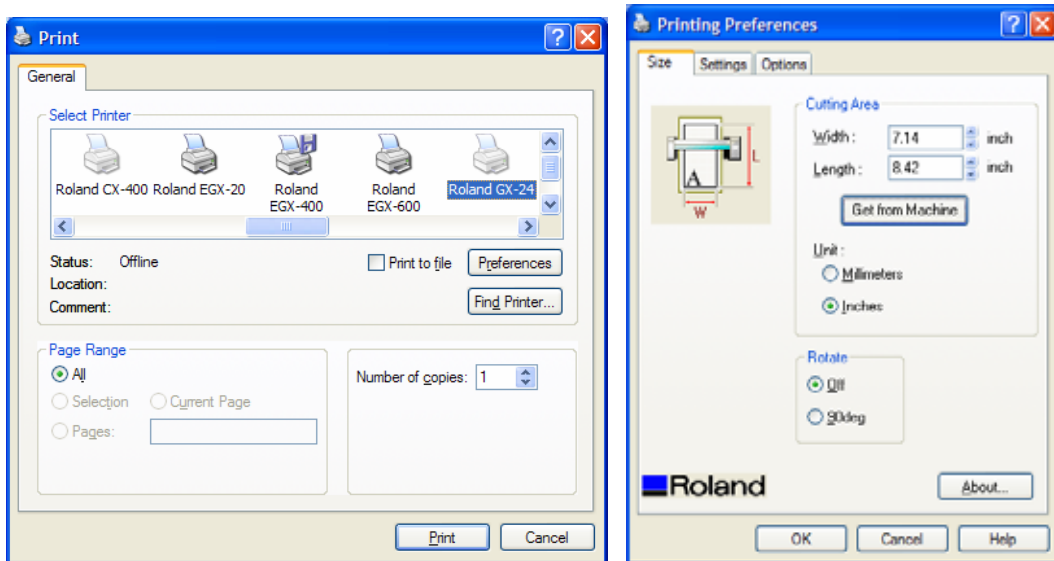
Date: 6/23/2005

Author: RR

4. Click File > Print. In the Print dialog ensure that the GX-24 is the selected Printer and then click on the Setup button in the lower left of the screen.



5. Select the GX-24 and go to the Preferences. In the Printing Preferences click on the Get From Machine button to poll the page size from the machine and click OK and Print to get back to the Illustrator Print Window.



Support Bulletin: RASD-SB00001

Model: Roland GX-24

Subject: Cutting from Adobe Illustrator CS (Windows) using the Windows Driver.

Date: 6/23/2005

Author: RR

- 
6. The Print preview window should show the proper page size and orientation and at this point click Print to output the file to the unit.

