

# StealthMILL 1.0

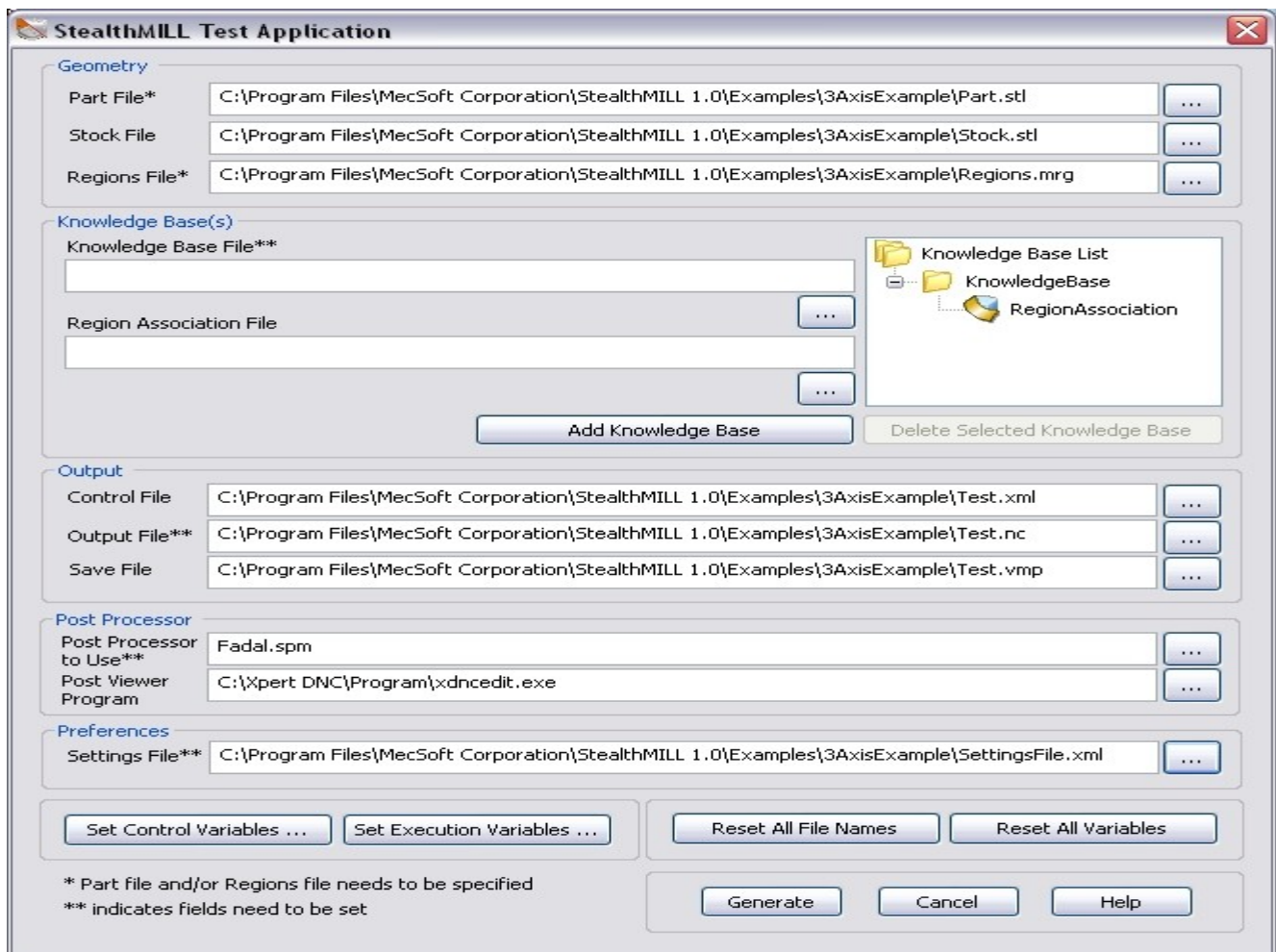
**StealthMILL 1.0** is a stand-alone console application that has all of the functionality of VisualMILL 6.0 but runs without a Graphical User Interface (GUI). This application is specifically created to allow OEM vendors who require VisualMILL 's CAM functionality but wish to use the a user interface that is different from that of VisualMILL.

There are two ways by which this application can be used.

- Using the StealthMILL test application specially created to drive StealthMILL
- Using command prompt by giving a control file path as an argument.

The StealthMILL test application is a stand-alone application created to facilitate testing of StealthMILL. This application creates a control file by taking inputs through a dialog and with this control file as input, runs the StealthMILL application to generate tool paths. The generated toolpaths can then be post-processed and the G-code files saved. Toolpath parameters are controlled by loading Knowledge Bases saved from VisualMILL 6.0.

A screen shot of this test program is shown below:



StealthMILL can also be run from the command prompt by giving a control file as input. A control file contains information about locations of various geometry files, knowledge base files to define Machining Operations, other control variables and execution variables. It is in XML format and is used to drive the StealthMILL application.

**NOTE:** StealthMILL requires a hardware key licensed with VisualMILL 6.0 in order for it to run.