



# Pixform Pro II Software



# Pixform Pro II

## ❖ Installing Pixform Pro II Software



### **NOTES:**

- Place Pixform Pro II DVD into computer and an install window will open.

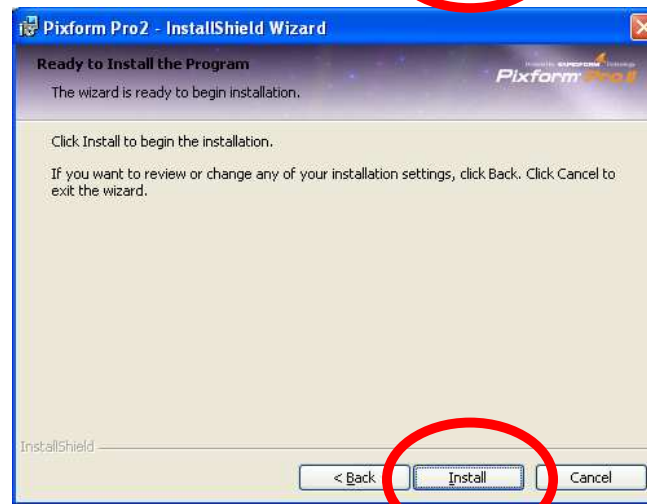
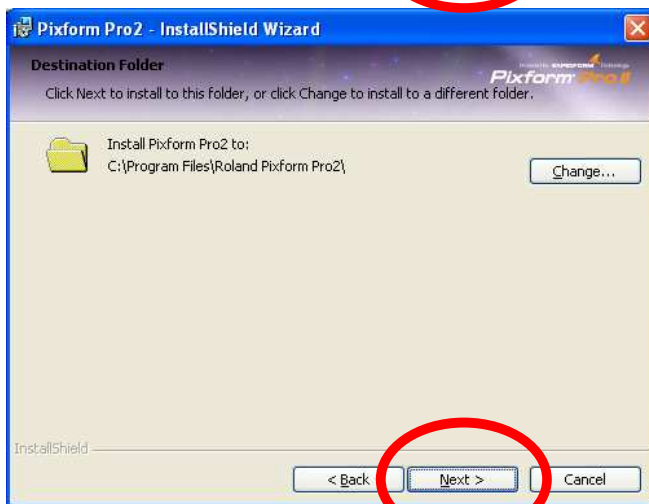
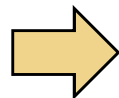
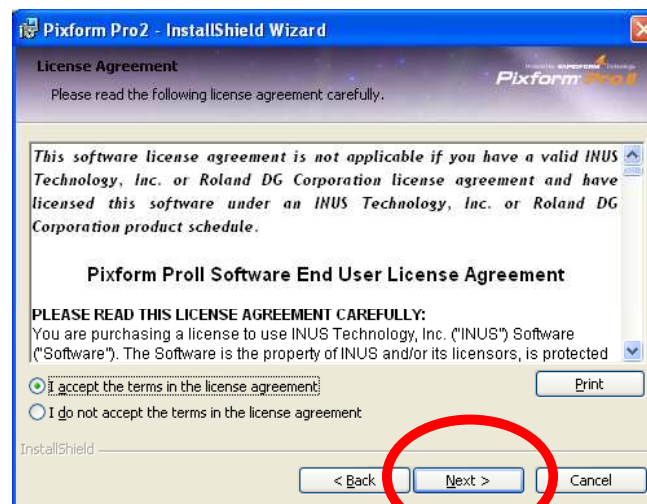
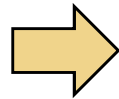
- Do not install the USB dongle at this time. After installing and setting up the program, connect USB dongle to computer.

- Click on “Install” to begin software installation.



# Pixform Pro II

## ❖ Installing Pixform Pro II Software



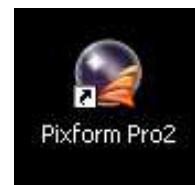
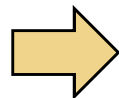
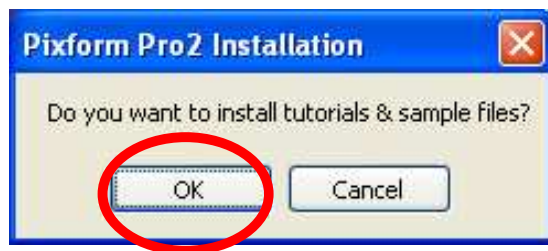
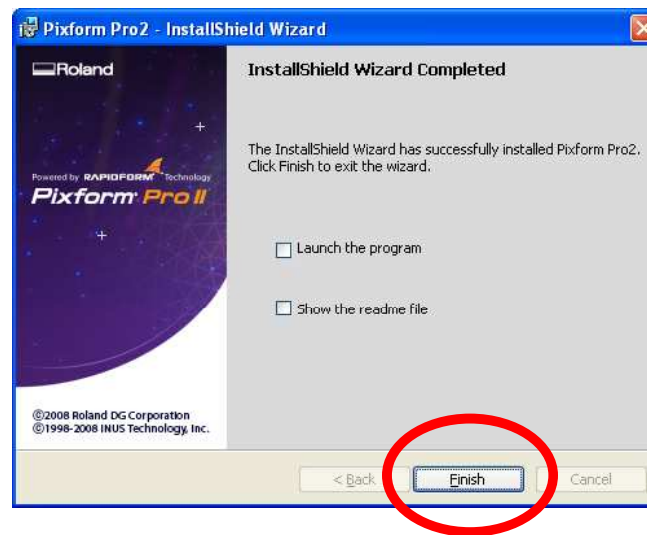
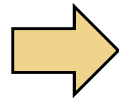
### NOTES:

- Install Shield Wizard will start up, click on “Next”.
- Read software license agreement, select “I accept...”, then click on “Next”.
- Click “Next” to accept default destination folder. (Recommended)
- Click “Next” to begin installation.



# Pixform Pro II

## ❖ Installing Pixform Pro II Software



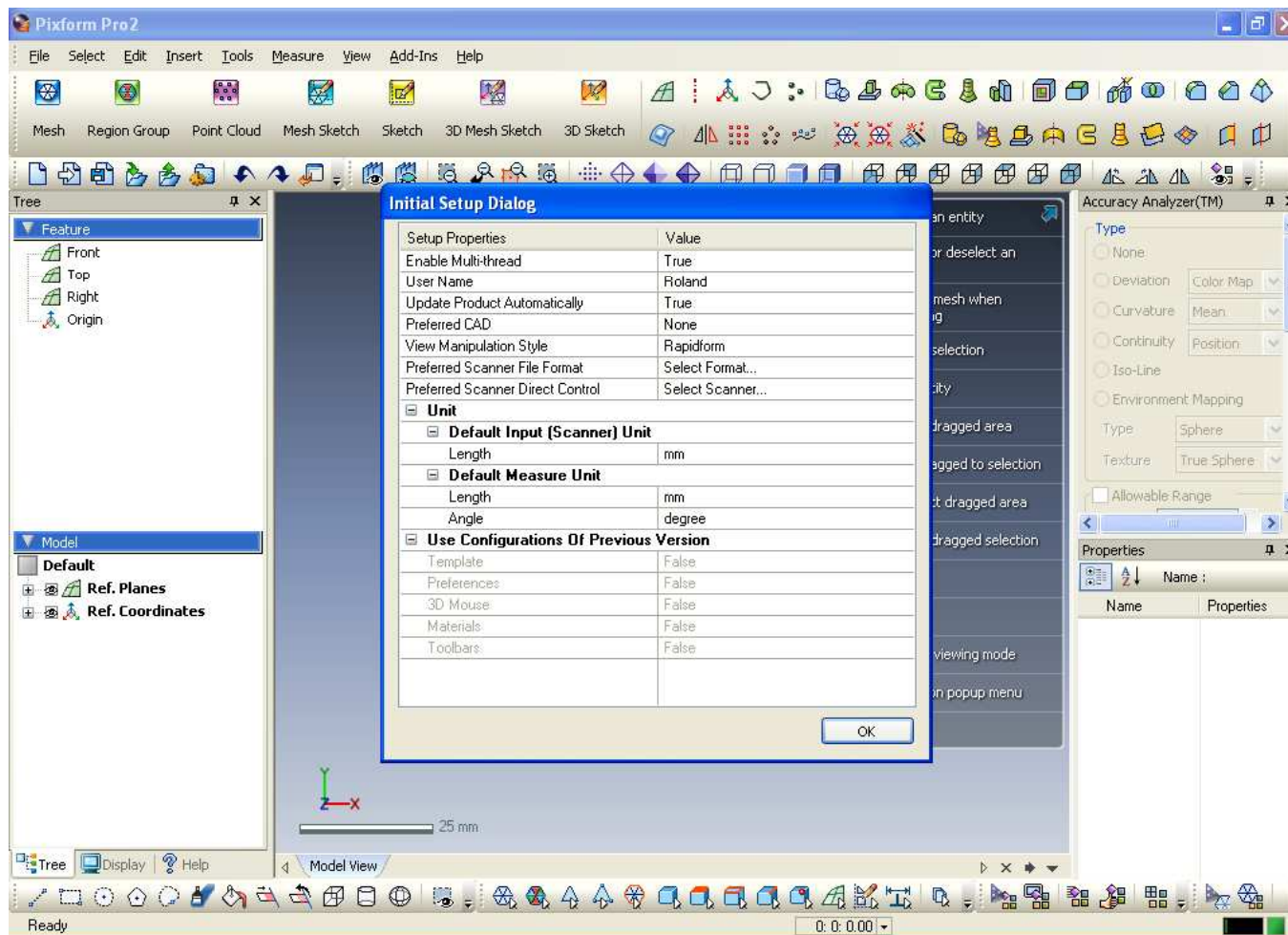
### **NOTES:**

- Software installation may take a few minutes.
- Once complete, uncheck Launch and readme options. After this click on “Finish”.
- A window will appear asking to install tutorials and sample files. Click on “OK”. Recommended.
- On your desktop will be a Pixform Pro shortcut. Double click on this icon to start software.



# Pixform Pro II

## ❖ Pixform Pro II Software



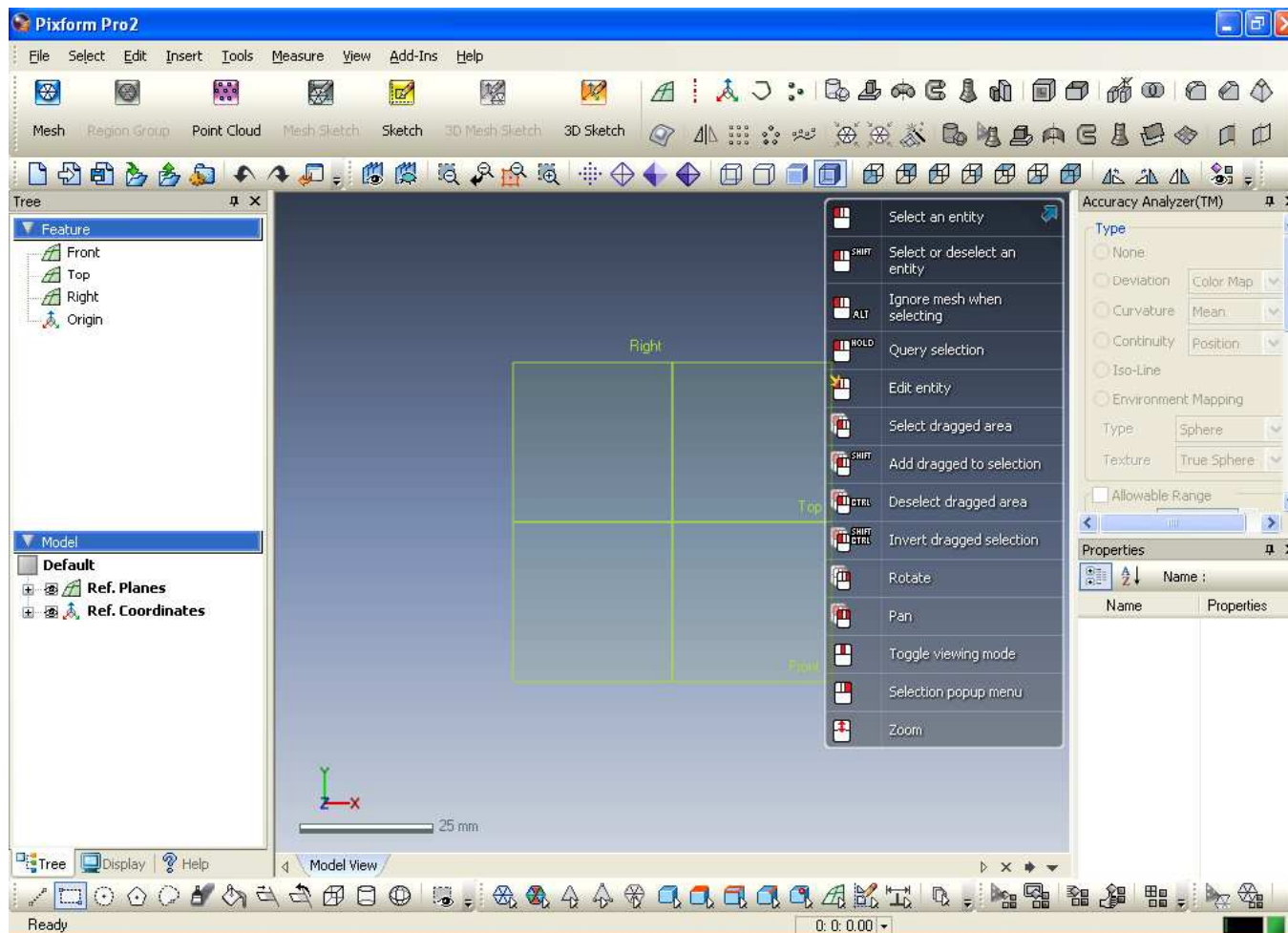
### **NOTES:**

- Software will launch with initial setup dialog box. Setup as you would like. Click on "OK" when finished.



# Pixform Pro II

## ❖ Pixform Pro II Software



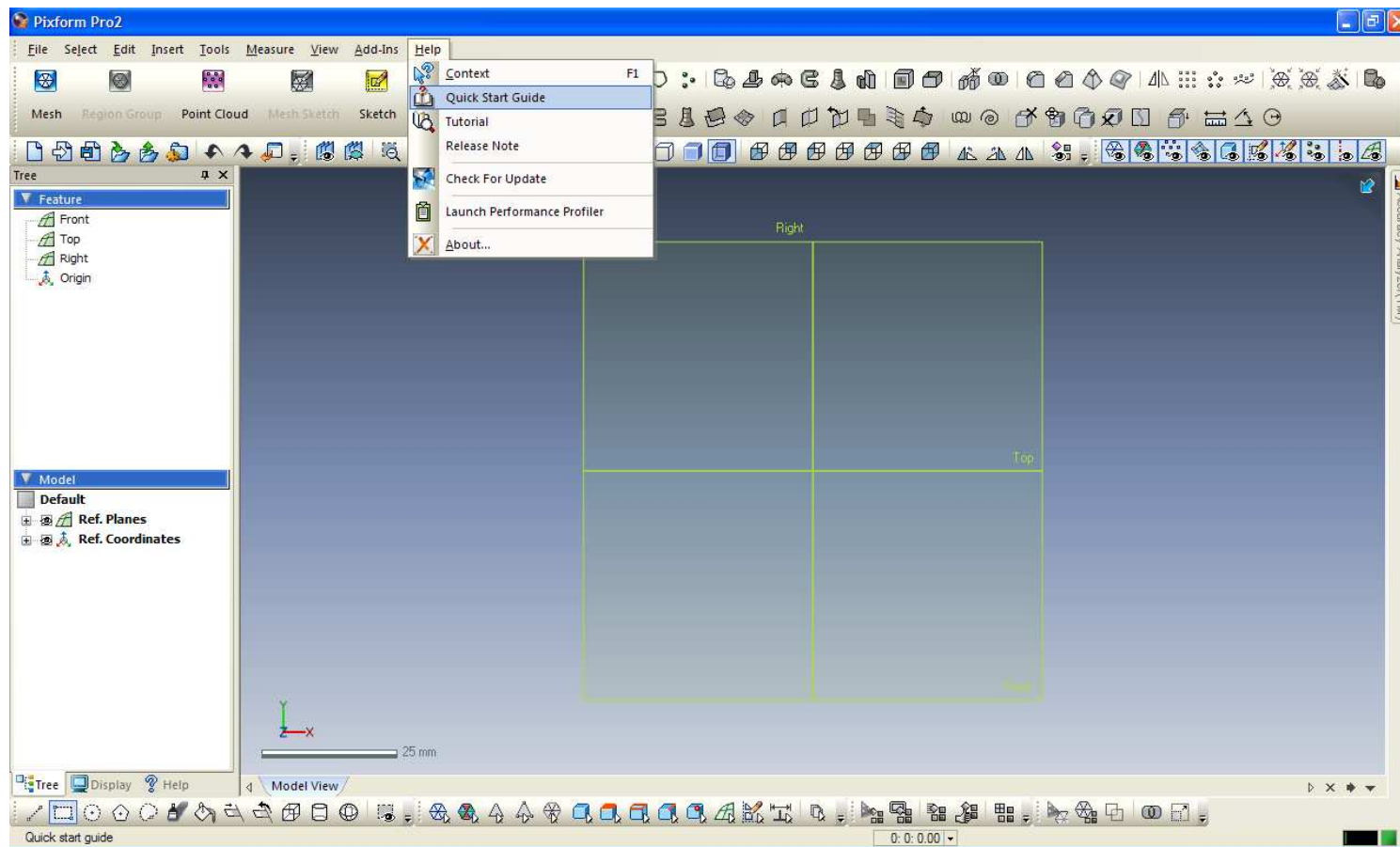
### **NOTES:**

- Initial startup screen.



# Pixform Pro II

## ❖ Learning Pixform Pro II Software



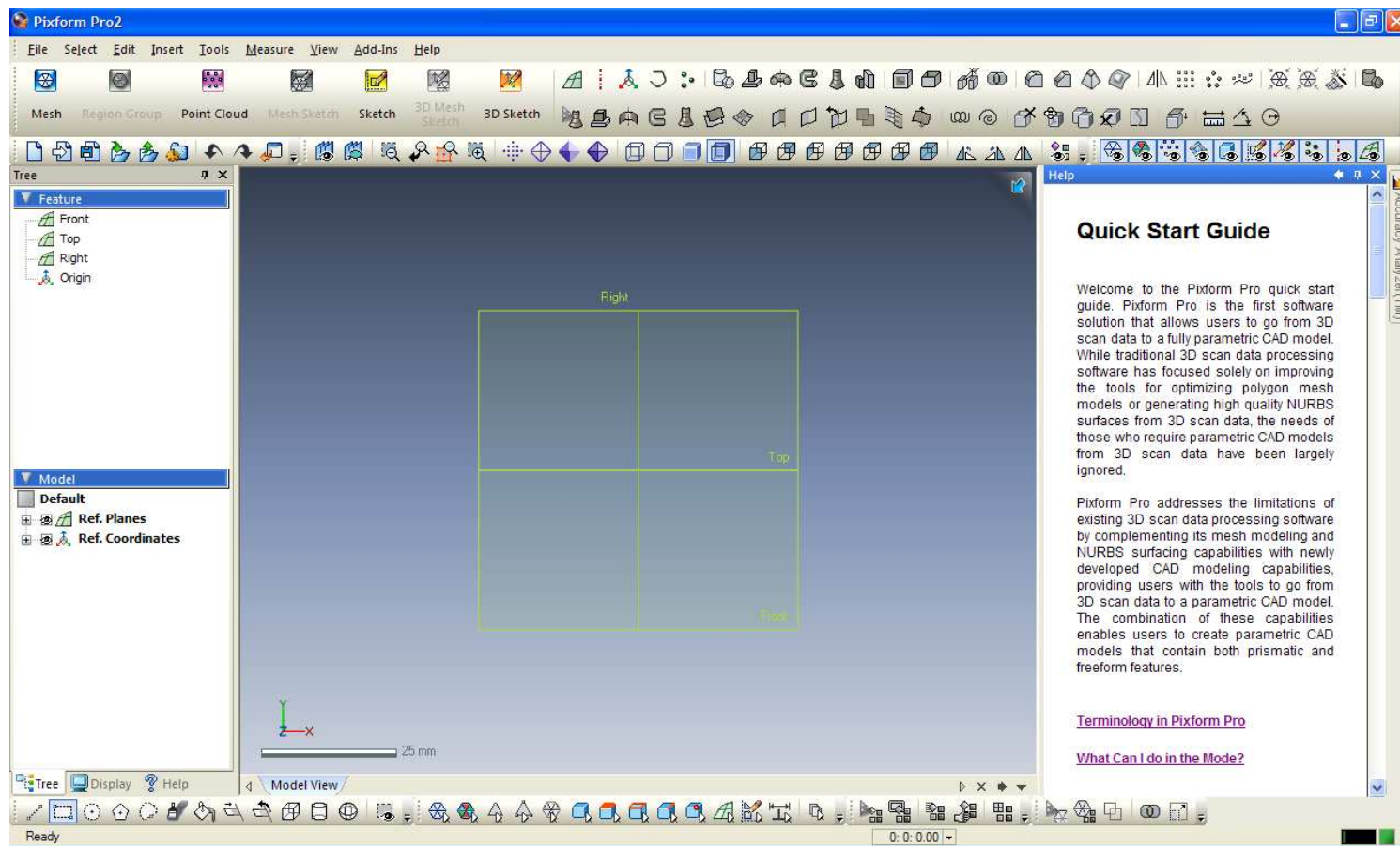
### **NOTES:**

- To quickly learn how to use the software, go to the “Help” menu and select “Quick Start Guide”. The quick start guide is a good way to get familiarized with the software, the various commands, and the workflow required to go from scan data to finished 3D model.



# Pixform Pro II

## ❖ Learning Pixform Pro II Software



### **NOTES:**

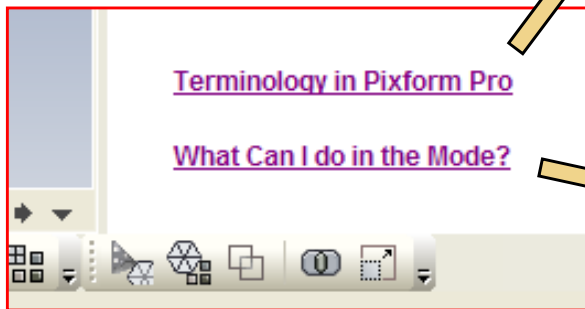
- The quick start guide will open within the software and is labeled Quick Start Guide.





# Pixform Pro II

## ❖ Learning Pixform Pro II Software



Model	A single document made up of mesh or features.
Feature	Individual shapes and geometric elements that construct a model. triangulated scan data or FEM mesh data that contains poly-face, poly-vertex, poly-edge or boundary.
Mesh	<p>A group or region made up of poly-faces. Regions assist in alignment of the mesh data to the global coordinate system and converting it to a surface.</p>
Region	

Mesh Mode		In the Mesh Mode, you can heal incomplete or edit color or texture mesh data using various
Region Group Mode		In the Region Group Mode, you can automatically

### **NOTES:**

•Click on “Terminology in Pixform Pro” hyperlink to learn more about the terms commonly used in the software. This will open an Internet Explorer web browser window with the terminology.

•Click on “What can I Do in the Mode” hyperlink to learn about the various modes in the software.

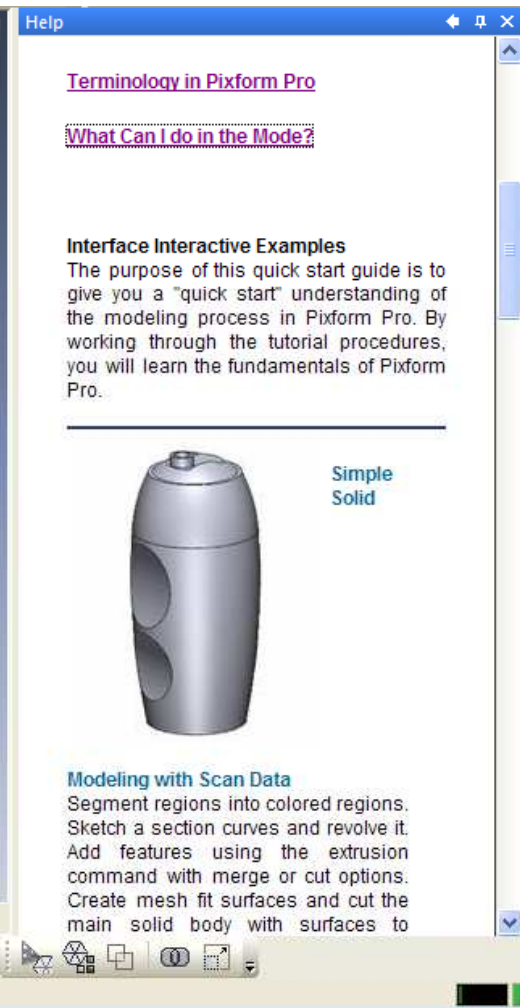


# Piform Pro II

## ❖ Learning Piform Pro II Software

### **NOTES:**

- Once familiarized with the terminology and explanation of different modes, there are various Interactive tutorials to learn from.



Mesh Editing  
Heal the mesh



CAD



End-To-End



Solid



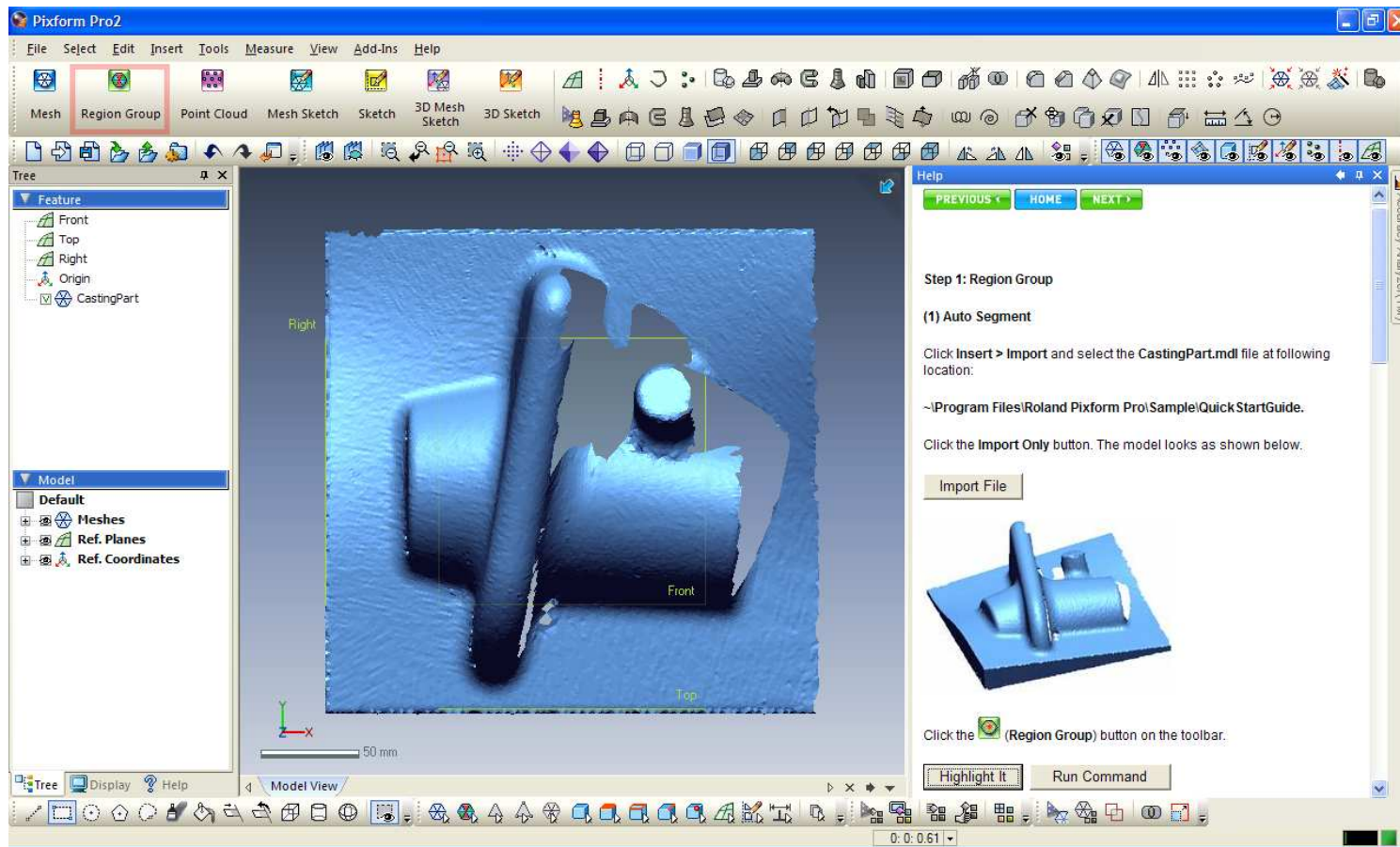
Mesh BuildUp Wizard & Auto





# Pixform Pro II

## ❖ Learning Pixform Pro II Software



### **NOTES:**

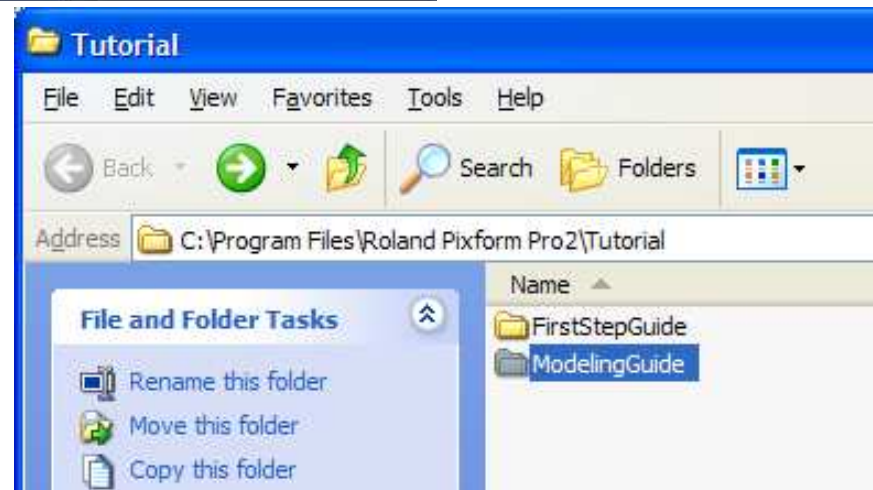
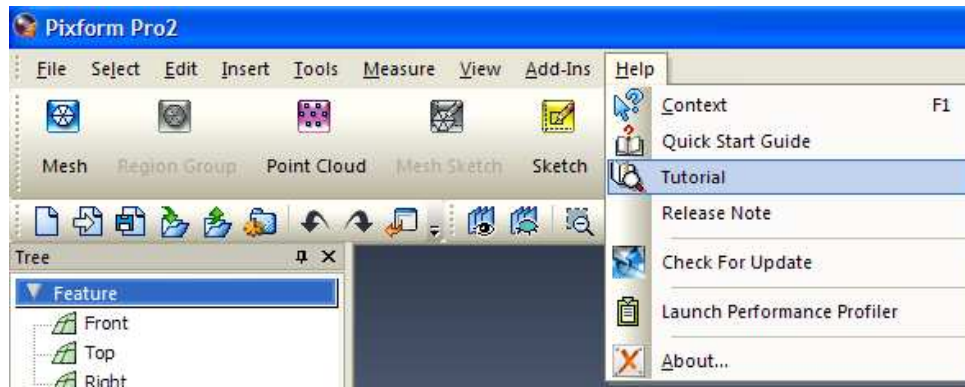
- After a tutorial has been selected, the software will walk you through the various steps within the tutorial. When it comes to selecting a new icon, it will highlight it when you click on “Highlight”



# Pixform Pro II

## ❖ Learning Pixform Pro II Software

- Additional guides and sample files can be found by selecting "Tutorial" under the Help menu.



### **NOTES:**

- This will open a folder that will contain various guides and sample models.



# Pixform Pro II

## ❖ Learning Pixform Pro II Software

### **NOTES:**

- This will open a folder that will contain various guides and sample models.



# Pixform Pro II

## ❖ Learning Pixform Pro II Software

- Additional guides and sample files can be found by selecting "Tutorial" under the Help menu.

### **NOTES:**

- Located within the folders are various pdf tutorials, sample data, and completed models.




Lesson1 Bottle 3D CAD Implementation

### Step4. Mesh Sketch

Creating the features of the site of the bottle cap requires a sketch to serve as the base. In step 4, you extract a section polyline of the site of the bottle cap in the Mesh Sketch mode to create a sketch. The Mesh Sketch command extracts a section polyline from a cross-sectional or full silhouette of the mesh or point cloud. You can use the Line, Circle, and Rectangle commands to create 2D sketches from the extracted section polyline.

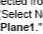
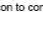
#### 4-1. Changing to the Mesh Sketch Mode

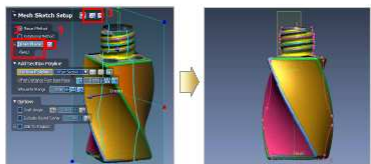
4-1-1. Click the Mesh Sketch icon to change to the Mesh Sketch mode.




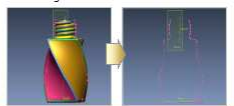
#### 4-2. Extraction of a Section Polyline

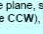



4-2-1. Perform extraction of the section polyline.

- (1) "Plane2" remains selected from the previous process (Creation of Ref. Plane 2), and so clicking the  (Select None) icon to the right of Entities resets Entities.
- (2) Base Plane: Select "Plane1."
- (3) Click the  (OK) icon to confirm.



4-2-2. When sketching the section profile, you hide the meshes to provide better visibility. Select  : View > Visibility > Meshes, then make the setting to hide the meshes.



**Note: About Correcting the View Direction**  
When you want to correct the view direction for Model View relative to the base plane, select View > Viewpoint, then make the setting for the view direction.  
When you want to perform alignment relative to the specified base plane, select  : View > Viewpoint > Align. Then use the  : (Rotate CW),  : (Rotate CCW), and  : (Flip) commands to set the view direction.

Roland DG Corporation 12/36